



Cedar Grove Landscape & Construction Services

<http://www.cedar-grove.com/services.asp>

COMPOST FILTER BERMS & SOCKS

*Cost-effective tools that provide control of sediment and soluble pollutants.
Compost Filter Berms & Socks meet King County Surface Water Design Manual temporary
erosion and sedimentation control BMP D.4.3 requirements*

Compost Filter Berms & Socks Advantages Compared to Silt Fencing

- No trenching required. Easy to place anywhere.
- Superior sediment filtration, without clogging.
- Remove nutrients and petro-chemicals.
- High flow-through rates reduce wash-outs.
- Wildlife friendly.
- Minimal disposal costs. Biodegradable sock option.
- Compost reusable on-site as soil amendment to comply with Soil Quality and Depth BMP.

See Why Compost-Based Erosion Controls Are the Best Tools to Meet NPDES Phase II for supporting research citations

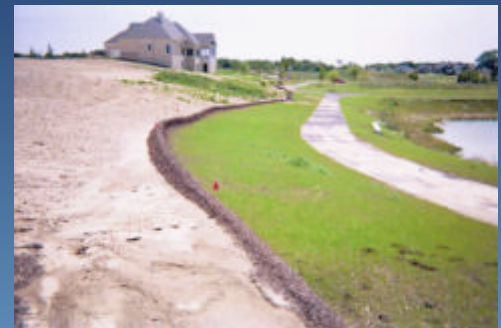


Cedar Grove works with blower trucks that apply compost, soil and bark; and is a certified provider of Filtrxx Soxx. Products and services include:

- Installing Compost Filter Socks.
- Delivery of pre-filled Filter Socks.
- Compost berm installation.
- Compost blankets installation.
- Erosion control design and calculations

Filter Berms

Filter Berms are uncontained rows of coarse compost blown in place.



Filter Socks

Filter Socks contain compost in mesh tubes for greater stability and precise placement on varied terrain. They can be blown in place, or delivered in sections.



Cedar Grove Compost Filter Socks & Berms Specifications

COMPOST BERM DESIGN AND INSTALLATION SPECIFICATIONS

1. Compost shall be the result of the biological degradation of Type I or III Feedstocks, under controlled conditions designed to promote aerobic decomposition, per WAC 173-350-220.
2. Compost shall be certified in compliance with U.S. Composting Council Seal of Testing Assurance (STA) program. **Approved products include Cedar Grove Compost.**
3. Compost shall meet the particle size gradation in table 2.
4. Compost berms shall be sized and spaced as indicated in table 1.
5. Compost berms shall be applied using a pneumatic blower device or equivalent, to create a uniform cross-section and berm density.
6. Compost berms shall be triangular in cross-section. The ratio of base to height dimensions shall be 2:1.
7. Compost berms shall not be used on slopes greater than 2H:1V.
8. Berms shall be placed on level contours to dissipate flows. Ends of berms shall be constructed angling upslope to prevent water flowing around them.
9. When possible, berms shall be placed 5 feet or more from the toe of slopes to allow space for sediment deposit.
10. Feedstocks shall originate from local recycling collection programs.

COMPOST FILTER SOCK DESIGN AND INSTALLATION SPECIFICATIONS

1. Compost shall be the result of the biological degradation of Type I or III Feedstocks, under controlled conditions designed to promote aerobic decomposition, per WAC 173-350-220,
2. Compost shall be certified in compliance with U.S. Composting Council Seal of Testing Assurance (STA) program. **Approved products include Cedar Grove Compost.**
3. Compost shall meet the particle size gradation in table 2.
4. Compost Filter Socks shall be mesh tubes, minimum 8-inch diameter. Use larger Socks where ponding is likely.
5. Socks shall be filled using a pneumatic blower hose or equivalent, to be firmly packed yet flexible.
6. Once placed on the ground, apply weight to the sock by walking on or rolling to improve contact between the sock and the ground surface.
7. Compost socks shall be a minimum 8 inches in diameter. Larger diameter socks are recommended for areas where ponding is expected behind the compost sock.
8. Compost socks shall not be used on slopes greater than 2:1.
9. Compost socks shall be spaced as indicated in table 1
10. Filter socks shall be placed on level contours to dissipate flows. Ends of socks shall be constructed pointing upslope to prevent water flowing around.
11. Feedstocks shall originate from local recycling collection programs.

TABLE 1. Compost Filter Sock and Berm Spacing, and Berm Size

Slope	Maximum Spacing	Berm Size (height x base)
0%-2%	250 ft.	1 ft. x 2 ft.
2%-10%	125 ft.	1 ft. x 2 ft.
10%-20%	100 ft.	1 ft. x 2 ft.
20%-33%	75 ft.	1 ft. x 2 ft.
33%-50%	50 ft.	1.5 ft. x 3 ft.



TABLE 2. Compost Particle Size for Filter Socks & Berms (EPA)

Vegetated Socks & Berms		Unvegetated Socks & Berms	
Sieve Size	Percent Passing	Sieve Size	Percent Passing
1"	90-100	1"	100
3/4"	70-100	3/8"	10-30
1/4"	30-75		